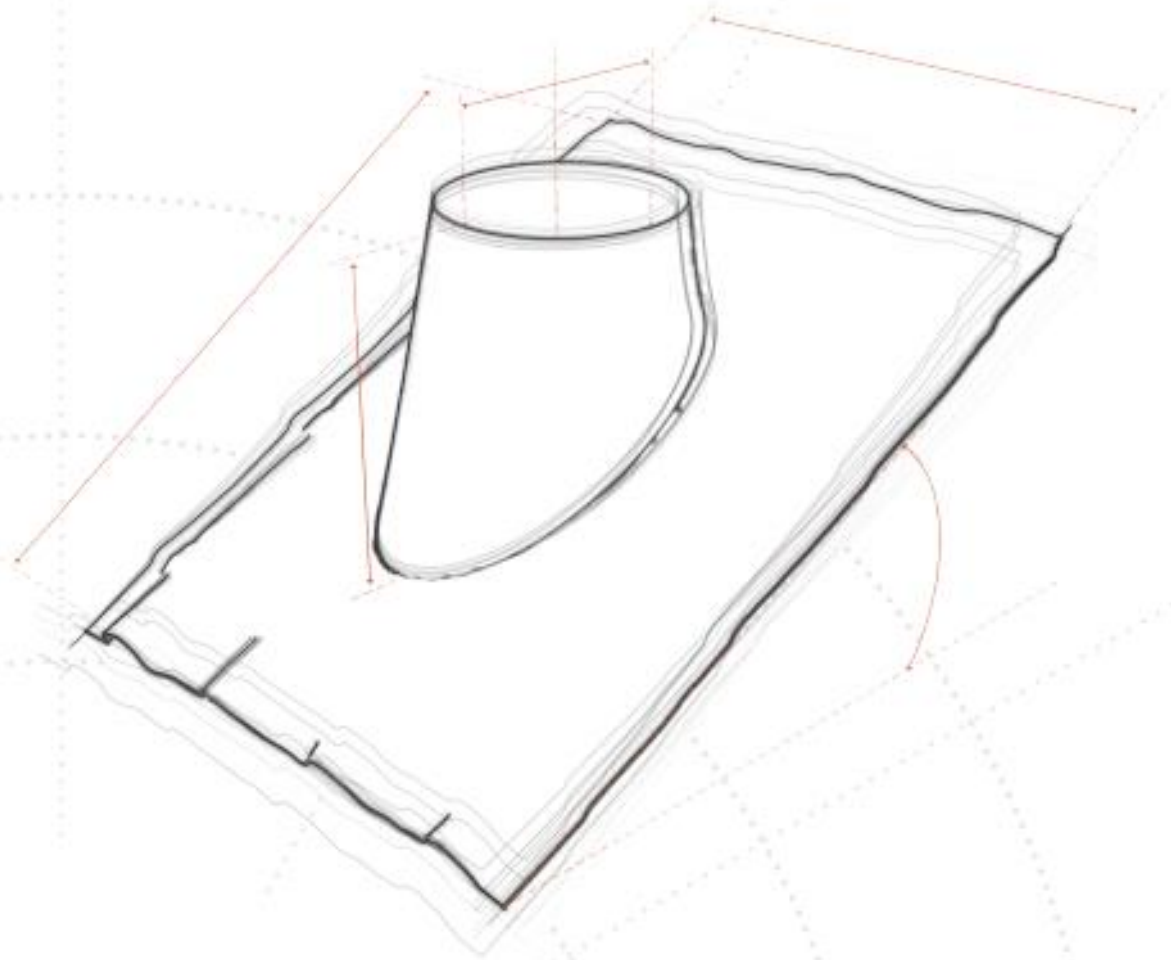


flue&ducting

Total Chimney Solutions



DURAFLASH

by flue & ducting ltd

TECHNICAL PAGES

DURA FLASH

Dura Flash is a range of hi-tech roof flashings that is an outstanding alternative to traditional lead flashings. Stainless steel mesh embedded into a multi-layer Polyisobutylene (PIB) laminate makes the installation of this product close to sticking a big sticker on the roof. The PIB membrane does not contain lead which makes it not only environment-friendly and lightweight but also worthless for thieves. High stretchability (100% in both directions) allows to fit it to literally any shape of roof coverage.

MATERIALS:

CONES: shiny aluminium, black powder coated galvanized steel

MEMBRANE: PIB laminate with stainless steel mesh in between the layers

DIAMETERS AND SIZES:

STANDARD: 130mm, 150mm, 180mm, 200mm

OTHERS: available on request

MEMBRANE SIZES:

- 5" 1080x625mm
- 6" 1080x685mm
- 7" 1080x685mm
- 8" 1080x685mm

AVAILABLE COLOURS:



APPLICATION AND STORAGE:

The PIB membrane is not compatible with the following substances: Petrol, Oil, Nitro-paint thinner, Hydrochloric-acid, Bitumen, Tetrahydrofuran, Tar, Bitumen, Turpentine.

Before laying Dura Flash please ensure the surfaces are dry and free of dust/oil/ice/silicone.

Application temperature: +5°C up to +40°C

Storage temperature: +5°C up to +25°C (+40°C for short periods of time). During storage prevent exposure to direct sunlight and moisture.



LEAD FREE



100% STRETCH



2 COLOURS AVAILABLE



SELF WELDING



UV PROOF



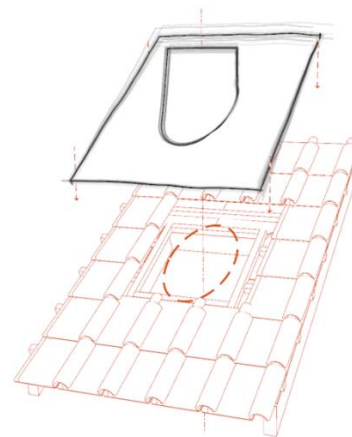
NO SCRAP VALUE

TIPS & TRICKS:

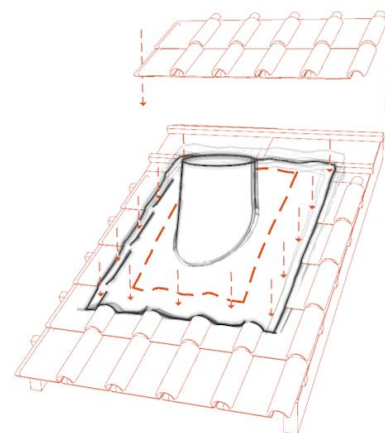
SURFACE PREPARATION: The PIB membrane is not compatible with the following substances: Petrol, Oil, Nitro-paint thinner, Hydrochloric-acid, Bitumen, Tetrahydrofuran, Tar, Turpentine. Before laying Dura Flash please ensure the surfaces are dry and free of dust/oil/ice/silicone.

CONSTRUCTION PREPARATION: Make sure the cone of the flashing never stays unsupported after the installation. It should lean against the roof tiles, roof beams or purposefully created construction in at least two, preferably 3 or more points.

NOTE: Make sure you recognize the chimney system's distance to combustible materials at the same time. Shall the cone support be closer than the chimney's distance to combustibles, use an incombustible material for the cone support.

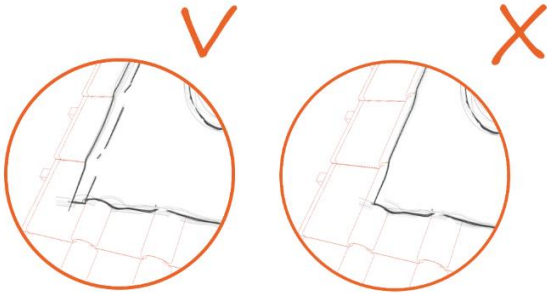


MOLDING THE MEMBRANE: After tearing off the protection foil on the back side mould the membrane to the tiles on the sides of the outlet. Do not mold the membrane further towards the center than necessary and definitely avoid molding it close to the cone in order not to break the connection. The membrane stretches up to 100% in both directions.

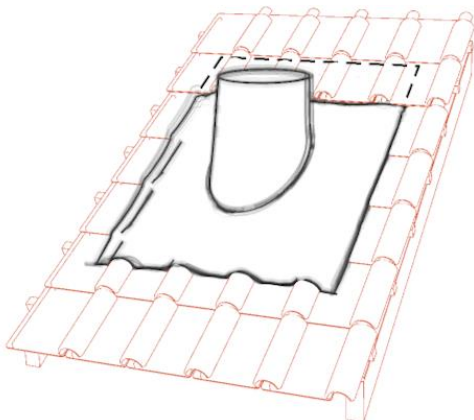


NOTE: It is very important to pre stretch the membrane in the direction opposite to the direction it will be moulded in. The stainless steel mesh inside cuts the material and gives it "memory" to stay as shaped after installation.

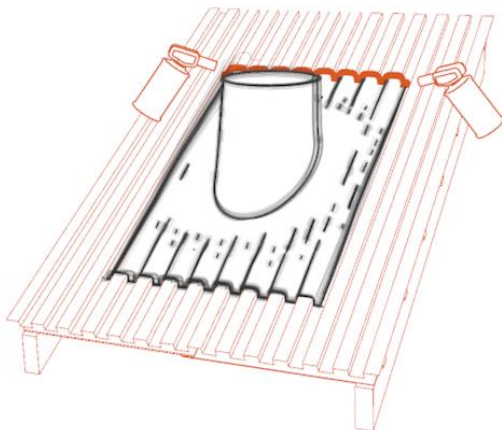
SIDE FINISH: For profiled tiles the sided overlap of M-Flex has to follow over the next hip to the end of the water channel. With plain tiles the sided overlap has to be at least 120mm.



TOP FINISH: Whenever possible (roof tiles) the top edge of the flashing shall be hidden under the roofing material. This solution almost guarantees a flawless water tightness.



In case it is not possible to put the membrane under the roof material (steel, glass) Dura Flash allows to stick the flashing onto the roof exposing the top verge of against the watercourse.

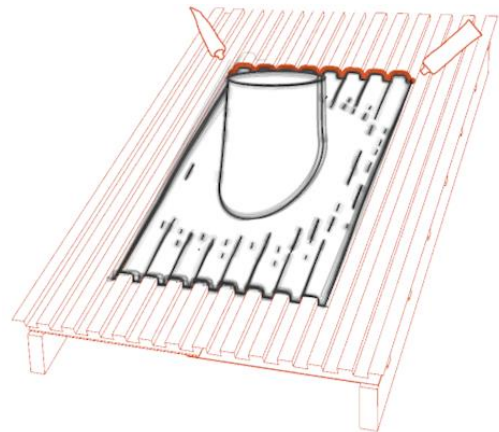


NOTE: This type of installation shall be executed with utmost care!

Once the flashing is stuck on the roof use a burner to heat up the verge of membrane. This allows the break the surface tension of the material and the glue will stick much stronger to the membrane.

Then apply glue all along the top verge and couple inches down the side verges. Apply glue very carefully making sure it fills every gap between the roof and the membrane. Form the glue in such a way that it allows water to easily get to the top of the membrane.

NOTE: The glue likes water. It is therefore a good idea to wet the verge of the membrane and the roof material a bit before applying glue.



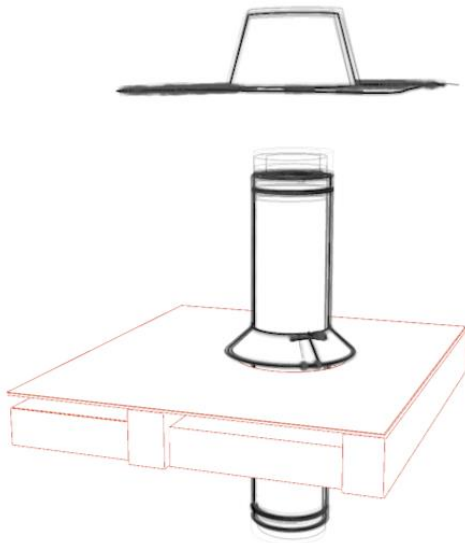
NOTE: It is highly recommended to use our moulding tools:

- Pre-stretch tool – allows to easily and effortlessly to pre-stretch the membrane before gluing it to the surface
- Roller – while moulding it applies 68 times more pressure than you are able to generate with your palm.

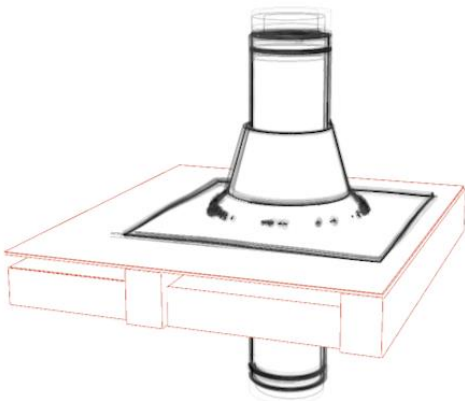
NOTE: In case the roof surface is very dirty and impossible to clean enough to have the membrane stick to it please use butyl tape along the edges of the membrane. In order to do that:

- place the flashing on the roof and mark the edges of the membrane
- remove the flashing
- glue butyl tape strips about 0,5-1" closer to the centre of the flashing than the lines show to avoid butyl coming out over the edges of the membrane
- continue with regular installation steps

FLAT INSTALLATION: In case of flat roofs it is recommended to install a regular DTW storm collar under the Dura Flash (approx.. 0,5-1" above roof level).

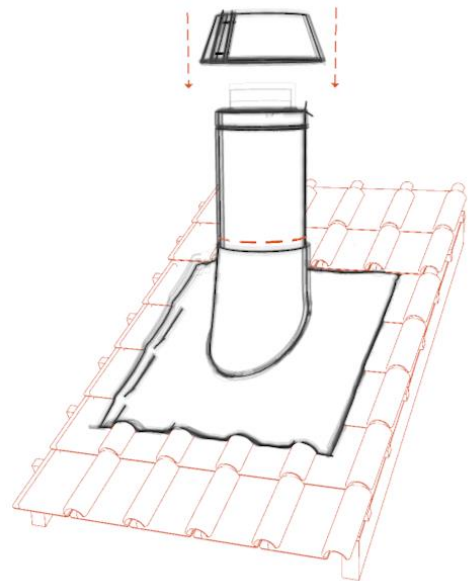


This allows the membrane to form properly and reduces the risk of water pooling.



Once the flashing is installed and the membrane moulded, all 4 edges of the membrane require finishing with a burner and glue. Once those steps are accomplished a Dura Flash storm collar should be installed according to the following steps.

COLLAR: Prepare the collar for installation by twisting it and catching first couple of threads on the bolts. The bolts are made very long purposefully to simplify that first step. A collar prepared in this way can now be mounted on a pipe. Make sure you leave an inch or two over the top of the cone for ventilation.

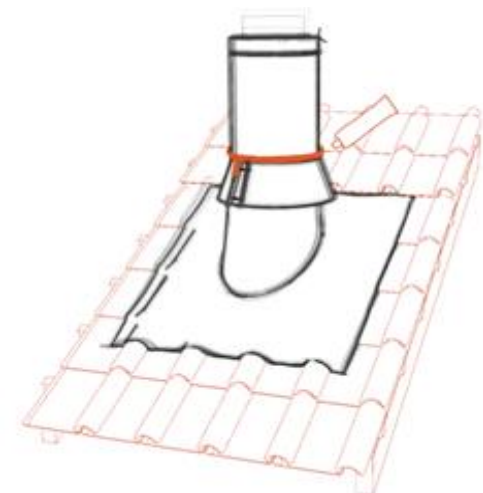


After the position of the collar on the pipe is known, tighten the screws firmly and apply glue all along the collar to make the connection water tight.

If it is possible to remove the pipe for the time of collar installation (access from the bottom to install a locking band at a later stage) it is recommended to do it. This will allow you to apply the glue both from the top and from the bottom minimizing the chances of any leakage.

In case this is not possible apply the glue from the top only with utmost care to fill every gap between the collar and the jacket pipe.

The glue must also be applied couple of inches down the bolt plates.



GUARANTEE TERMS AND CONDITIONS:

Flue and Ducting Ltd offer a 10 year warranty on DURA-FLASH against the faulty manufacture of the product or defective fuels/materials used when system has been fitted for its sole purpose as a domestic chimney in use with Flue and Ducting Ltd recommended fuels only.

The Warranty scheme is subject to the following conditions:

- Flue and Ducting Ltd Registration card is completed by the HETAS installer on completion of work and is sent to Flue and Ducting Ltd within 30 days of job completion with all accurate information. Flue and Ducting reference numbers should be referred to in all future warranty claims.
- Any complaints should first be attended/investigated by the original HETAS engineer and if a fault/problem is found the HETAS engineer will need to report the fault/problem within 14 days to Flue and Ducting Ltd in writing with the initial registration card and all relevant information i.e. records of all proper maintenance of appliance and flue by a professional chimney sweep as recommended in our installation guide.
- The flue has been correctly installed by a HETAS registered installer and that Document J of the building regulations and our installation guide has been followed correctly.
- Appropriate distances to combustible materials are secured.
- After installation the chimney flue should be regularly checked (2-3 times per year) by a qualified chimney sweep to prevent the build-up of soot deposits in the chimney ways which can cause chimney fires, and that the collection of condensation is removed as this can cause introduction of premature corrosion. (Please see installation guide)
- The flue elements must not be damaged, modified or changed in any way before the installation is carried out we also strongly advise you use Flue and Ducting Ltd fittings as standard otherwise products used will need to be in the HETAS registered listings.
- The flue must be in accordance with the appliance and existing masonry flue and surroundings, this is down to the HETAS engineer to decide. If uncertain check with Flue and Ducting Ltd first or the manufacturer of the appliance.
- The appliance is installed, operated and maintained in accordance with the appliance manufacturer's warranty/instructions and complies with HETAS and Document J of the Building regulations.
- If any fault/problem should be found to be external of the chimney flue i.e. appliance, operation, installation or other the site survey will be chargeable at Flue and Ducting Ltd's discretion.

Should Flue and Ducting Ltd find that the flue supplied is of poor manufacture and does not meet the standard requirements, Flue and Ducting Ltd will offer a complete replacement element free of charge subject to the terms above.

This warranty only covers the cost of the replacement product and does NOT cover the cost of any external components, fixings, fittings, building work, installation or any other product/outside source other than the product supplied. All of which is the responsibility of the customer and this warranty is agreed when the sale of the product has taken place.

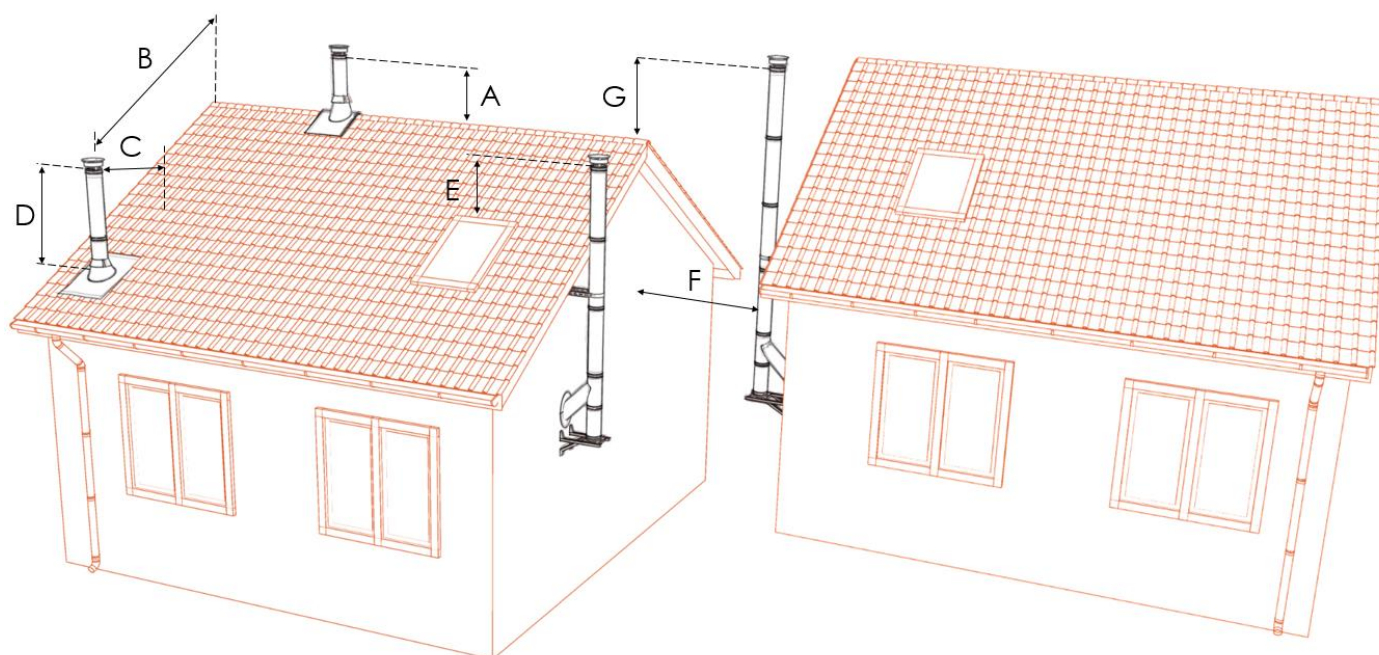
Reasonable efforts will always be made by Flue and Ducting Ltd to resolve the situation but please note that NO cash or any other payment types will be offered instead of the replacement product. The replacement of the product is the only offer that will be made in a warranty claim. The purchase of this product indicates that you agree to Flue and Ducting Ltd's warranty policy.

This warranty only applies in the UK, Flue and Ducting Ltd offer no warranty, further customer service or take any responsibility for the product when the product leaves the UK.

This warranty does NOT cover any of our products if installed with fully condensing boilers, or where harmful/dangerous gasses/chemical fumes are being used such as chlorine or halogenic vapours.

SOLID FUEL FLUE TERMINATION CHART

(see Gas Vent Technical Pages for gas flue termination chart)



The chart is based on the Document J of the building regulations for solid and oil fired appliances. For more details refer to current Building Regulations and National Standards. All the below are minimum measures measured from the top of the flue excluding terminals.

- A. 600mm above the roof ridge
- B. If this measure is less than 600mm from the roof ridge, the height (D) should be 600mm above the roof ridge
- C. 2,3m measured horizontally from the surface of the roof
- D. 1m with the provision of securing the C measure, or 600mm above the roof ridge if less than 600mm
- E. 1m above the top of a flat roof and any openable window, roof light, ventilator, etc.
- F. 2,3m
- G. If F is less than 2,3m then

IMPORTANT INFORMATION

Most installations of solid fuel and wood biomass appliances and systems are subject to the requirements of Building Regulations and are notifiable to the Local Authority in your area by law.

HETAS registered installers can self-certify their work, thus avoiding the need for costly and time consuming Building Notice applications to the local Building Control Department. HETAS Registered Businesses leave the customer with a Compliance Certificate and send a copy to HETAS for onward notification to the Local Authority.

This is a simple and effective process costing a few pounds whereas the local authority Building Notice can cost hundreds of pounds in some cases. The Certificates issued by HETAS and the notifications to Local Authority are important records demonstrating that work was done legally by registered, competent businesses and individuals and records that the registered business carried out the work in accordance with Building Regulations.

When people sell their houses, the information about work carried out under the Building Regulations in England & Wales is used by Solicitors on their inquiry forms and failure to demonstrate compliant work where applicable can adversely affect the sale of properties.

The information gathered in this way may be used in any future home information pack (HIP) requirement and Local Authorities are already required by law to hold such information.

Please note, all information given in this technical documentation is a guideline only. The products should only be fitted by a legally qualified person. Flue and Ducting Ltd cannot take responsibility for any installations.

It is required by law that a carbon monoxide alarm must be fitted with every new solid fuel appliance.

Warranty Registration Form

Installation address:

Product description	
Name of the company the product was purchased from	
Date of purchase	
Installers name and contact details	
Installers - HETAS/Gas safe/Offttech Registration.	
Date of installation.	
Type of appliance being used with Flue & Ducting Ltd product.	
Type of fuel being used and estimated usage.	

FOR YOUR WARRANTY TO BE ACTIVATED YOU MUST FILL OUT THE WARRANTY FORM WITHIN 30 DAYS OF INSTALLATION.

TERMS OF PAYMENT

Subject to any special terms agreed in writing between the Buyer and Flue and Ducting Limited, Flue and Ducting Limited shall be entitled to invoice the Buyer for the price of the Goods on or at any time after despatch of the Goods, unless the Goods are to be collected by the Buyer or the Buyer wrongfully fails to take delivery of the Goods, in which event, Flue and Ducting Limited shall be entitled to invoice the Buyer for the price at any time after Flue and Ducting Limited has notified the Buyer that the Goods are ready for collection or (as the case may be) Flue and Ducting Limited has tendered delivery of the Goods.

The Buyer shall pay the price of the Goods upon despatch of the Goods unless otherwise agreed in writing. Where Flue and Ducting Limited has agreed to credit terms the Buyer shall pay the price of the Goods (less any discount to which the Buyer is entitled, but without any other deduction) within 30 days from the date of the invoice, and Flue and Ducting Limited shall be entitled to recover the price, notwithstanding that delivery may not have taken place and the property in the Goods has not passed to the Buyer. The time of payment of the price shall be of the essence of the Contract.

Receipts for payment will be issued only upon request.

In respect of any services provided by Flue and Ducting Limited, Flue and Ducting Limited's standard charges and any additional sums payable shall be paid by the Buyer (together with any applicable Value Added Tax (VAT), and without any set-off or other deduction) within 30 days from the date on the invoice.

If the Buyer fails to make any payment by the due date then, without prejudice to any other right or remedy to Flue and Ducting Limited, Flue and Ducting Limited shall be entitled to:

1. Cancel the Contract, or suspend any further deliveries or service to the Buyer
2. Appropriate any payment made by the Buyer to such of the Goods (or the goods supplied under any other contract between the Buyer and Flue and Ducting Limited), or service as Flue and Ducting Limited may think fit (notwithstanding any purported appropriation by the Buyer.
3. Charge the Buyer interest (both before and after any judgement) on the amount unpaid at the rate of 8% per annum above the National Westminster Bank base rate until payment in full is made (a part of a month being treated as a full month for the purpose of calculating interest).

Flue & Ducting Ltd
STOCKPORT

Unit D6,
Stockport Trading Estate,
Yew Street, Stockport SK4 2JZ

Flue & Ducting Ltd
WELLINGTON

8E Castle Road,
Chelston Business Park,
Wellington, TA21 9JQ

Flue & Ducting Ltd
BALLYCLARE

Unit 16,
Avondale Business Park
Ballyclare, BT39 9AU

flue&ducting

Flue and Chimney Supplies



To order please:

Log in: www.flue-ducting.co.uk

Email: sales@flue-ducting.co.uk

Call: 0161 480 2994

or collect from our trade counter

