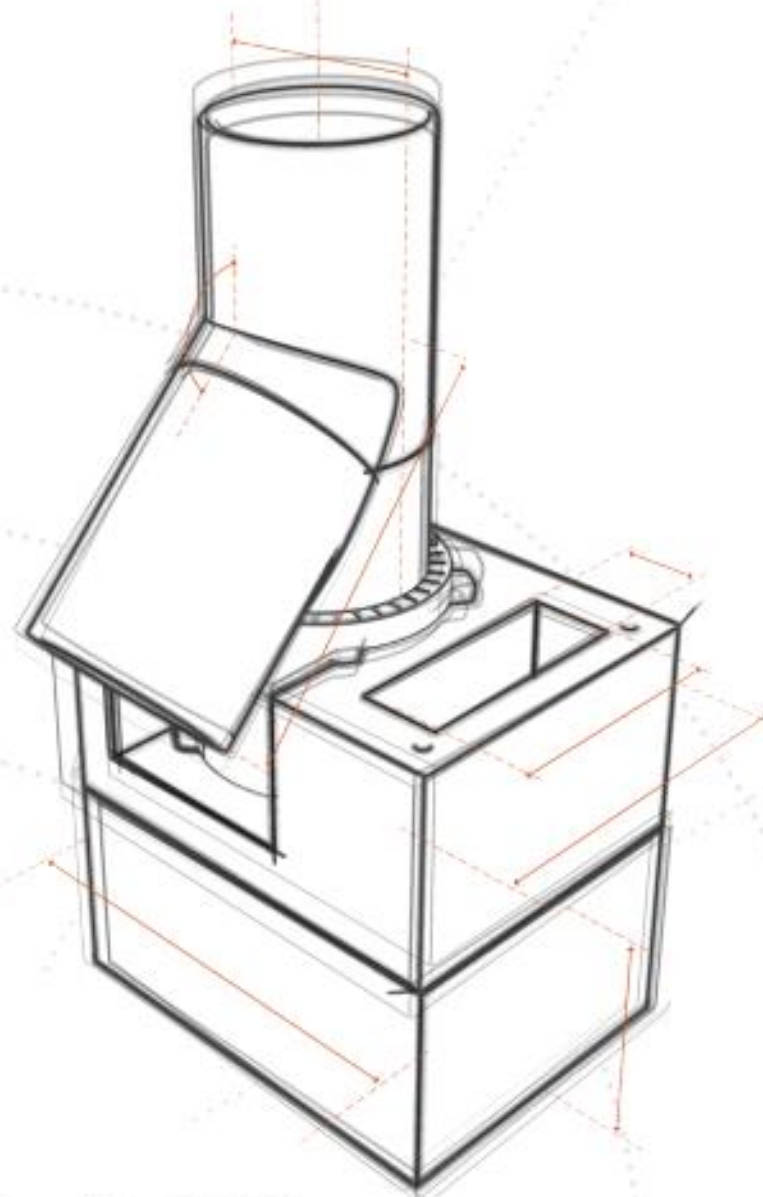


# flue&ducting

Total Chimney Solutions



## CERAMICS



by flue & ducting ltd

TECHNICAL PAGES

## DURA FLUE CERAMIC

Dura Flue Ceramic system offers practically a lifetime resistance against condensation and acids that can be found in smoke. It is appropriate for any kind of fuel, simple to build and lightweight. It is the only ceramic system on the market offering brick rendered rings which save hours of painstaking bricklaying. The simplified range includes universal casing blocks - one size for all three available liner diameters. Ventilated casing blocks offer an outstanding range of uses for the additional channel going through the house – air inlet for stove or ventilation system, electric wire duct, solar system piping duct, additional water piping duct or ventilation outlet duct.

There are several specific elements increasing the value of the system:

Double casing block	Single/double ventilated casing blocks
	
Universal tee outlet insulation	Pre-manufactured 135 tee
	
Brick rendered rings	
	



LIGHT  
WEIGHT



COMPLETE  
RANGE



LIFETIME  
WARRANTY



ALL ON  
2 PALLETs



RENDERED  
BRICK RINGS

## MATERIALS:

**LINER:** high quality ceramics

**INSULATION:** pre-formed mineral insulation, thickness depends on liner diameter

**CASING BLOCKS:** concrete with 60-70% of expanded clay aggregate

## FUELS:

The system can be used with all kinds of fuels provided the working conditions stated in the designation numbers are fulfilled the fuels are HETAS approved.

## DIAMETERS:

**LINERS:** 160mm, 180mm, 200mm

**BLOCKS:** universal, fitting all liners

## APPROVALS:

CE Certificate 1020 CPR 030049556

EN 13063-3 T600 N1 D3 G50

EN 13063-2 T600 N1 D3 G50

EN 13063-1 T600 N1 D3 G50

EN 13063-3 T400 N1 W3 O50

## DISTANCES AND MEASURES:

### BLOCK SIZES:

Single casing block – 360x360x240mm

Single ventilated casing block – 380x520x240mm

Double casing block – 770x380x240mm

Double ventilated casing block – 890x360x240mm

### WEIGHTS:

Single casing block – approx. 100kg/m

Single ventilated casing block – approx. 130kg/m

Double casing block – approx. 200kg/m

Double ventilated casing block – approx. 210kg/m

### GLUE EFFICIENCY:

Ceramic liner glue: up to 7m -2kg; 7-12m – 4kg; over 12m – 6kg

Casing block glue: up to 7m – 25kg; 7-12m – 50kg; over 12m – 75kg

**WALL TIES:** required every 1,5m in case of external chimneys. In case of internal chimneys they are not required but recommended

**REINFORCEMENT RODS:** required when the free end over the roof exceeds 1,5m. The starting point for the rods shall be at least as far down from the roof as the free end's part.

**MAXIMUM HEIGHT:** of a ceramic system stack is 42m.

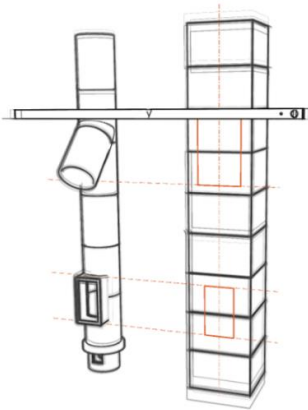
**OFFSETS:** The system is not designed to work with offsets. Ceramics is a very strong and durable material but it is not resistant to shocks and eccentric pressure. Its main purpose is newly built flues. All offsets shall be done below the base plate and can be made of one of our single wall product ranges.

To see our installation movie on go to  
<https://www.youtube.com/watch?v=HEJ7FzFZG7M>  
 Or search "Flue Ducting" on YouTube

#### TIPS & TRICKS:

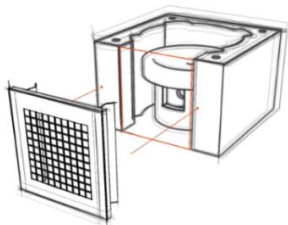
**TAKING MEASURES FOR SIDE INSTALLATION:** In order to prepare holes for the tee and cleanout in the casing blocks easily and accurately stack all liner elements up and a set of blocks next to each other. Using a spirit level you can now easily transfer the measures from the liner stack to the casing block stack. Set up a middle line and mark appropriate measures on its sides. Next, cut out holes with an angle grinder.

NOTE: it's good to locate the tee outlet as high as possible. This will come in handy in case you wanted to exchange the stove with a higher one in the future.



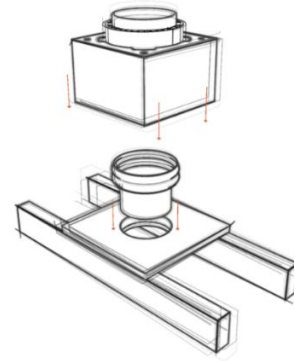
**SIDE INSTALLATION BASE:** Measure and cut out a hole for the ventilation grille in the first casing block from the bottom.

NOTE: In order to glue the first element to the condensate collector, apply glue onto the male coupler of the first element, turn it around and place with the glue part on top of the condensate collector. That is the only case when the glue is applied on the male coupler.

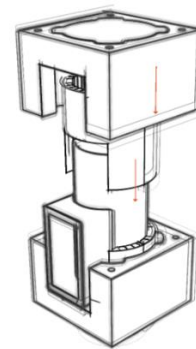


**TOP INSTALLATION BASE:** Place the base plate on the concrete lintel, insert a stainless steel adapter and a liner in.

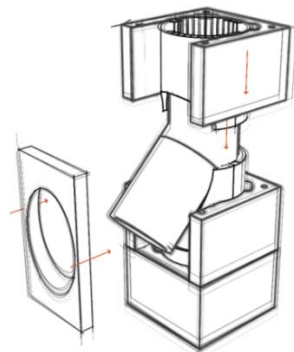
NOTE: you may want to use the biggest possible adapter and connect it to another one in the bottom. In this way you're only limited to the ceramic liner diameter in the future, not the adapter.



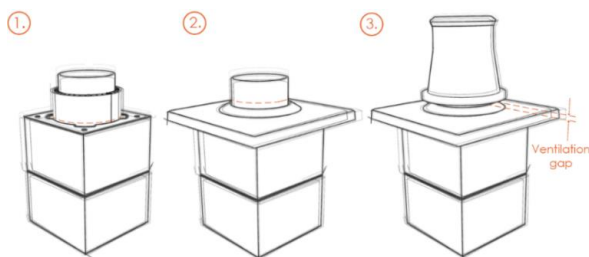
**CLEANOUT:** Cut out the afore-marked parts of the casing blocks. Measure and cut out pieces of insulation to make room for the cleanout branch.



**TEE PIECE:** Cut out the pre-marked parts of the casing blocks. Measure and cut out pieces of insulation to make room for the cleanout branch. After the installation fill up the missing parts of casing blocks with a Tee insulation board.



**FINISHING THE CHIMNEY:** Cut the insulation at the same level the casing block finishes. Next, put on the top plate and set the liner cutting line with a provision of ~1" ventilation gap. Cut the liner accordingly. Then install the clay pot adaptor in order to provide a base for the pot and glue the pot to the adaptor.



**GLUE MIXING & APPLICATION:** Mix boot ceramic and casing block glue according to the instructions on the packaging.

In order to apply the glue use a small or medium sized putty knife.

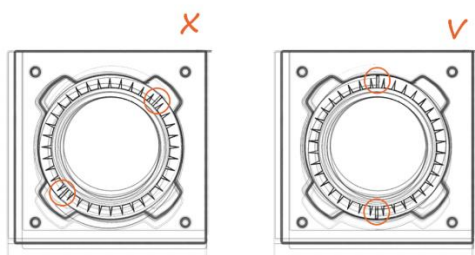
Use a wet brush or cloth to wet the couplers of the liner right before applying glue to them.

Connect the elements with male coupler facing down. Right after you put the elements together use wet cloth to remove the surplus of glue from the inside.

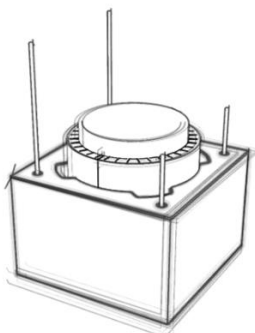
NOTE: In order to apply liner glue even more precisely you can use a plastic bag with one corner cut off and form a kind of pastry bag.

**LEVELLING:** Make good friends with your spirit level and check the construction at every stage and from every side.

**INSULATION:** Make sure the connection of two insulation pieces doesn't fall on the ventilation channels. It is recommended the horizontal connection of insulation doesn't fall on the same level as the casing block or inner liner connection. Should that be the case, cut couple of inches of insulation to assure overlap and avoid heat bridges.



**REINFORCEMENT RODS:** When installing reinforcement rods it is good to have at least two pairs overlapping on different levels. Alternatively each rod may be on a different level.



Flue and Ducting Ltd offer a lifetime warranty on DURA-FLUE CERAMIC against the faulty manufacture of the product or defective fuels/materials used when system has been fitted for its sole purpose as a domestic chimney in use with Flue and Ducting Ltd recommended fuels only.

The Warranty scheme is subject to the following conditions:

- Flue and Ducting Ltd Registration card is completed by the HETAS installer on completion of work and is sent to Flue and Ducting Ltd within 30 days of job completion with all accurate information. Flue and Ducting Ltd reference number should be referred to in all future warranty claims.
- Any complaints should first be attended/investigated by the original HETAS engineer and if a fault/problem is found the HETAS engineer will need to report the fault/problem within 14 days to Flue and Ducting Ltd in writing with the initial registration card and all relevant information i.e. records of all proper maintenance of appliance and flue by a professional chimney sweep as recommended in or installation guide.
- The flue has been correctly installed by a HETAS registered installer and that Document J of the building regulations and our installation guide has been followed correctly.
- Appropriate distances to combustible materials are secured.
- After installation the chimney flue should be regularly checked (2-3 times per year) by a qualified chimney sweep to prevent the build-up of soot deposits in the chimney ways which, can cause chimney fires and that the collection of condensation is removed as this can cause early introduction of premature corrosion.  
(Please see installation guide)
- The flue elements must be not be damaged, modified or changed in any way before the installation is carried out we also strongly advise you use Flue and Ducting Ltd fittings as standard otherwise products used will need to be in the HETAS registered listings.
- The flue must be in accordance with the appliance and existing masonry flue and surroundings, this is down to the HETAS engineer to decide. If uncertain check with Flue and Ducting Ltd first or the manufacturer of the appliance.
- The appliance is installed, operated and maintained in accordance with the appliance manufacturer's warranty/instructions and complies with HETAS and Document J of the Building regulations.
- If any fault/problem should be found to be that external of the chimney flue i.e. appliance, operation, installation or other the site survey will be chargeable at Flue and Ducting Ltd discretion.

Should Flue and Ducting Ltd find that the flue supplied is of poor manufacture and does not meet the standard requirements, Flue and Ducting Ltd will offer a

complete replacement element free of charge subject to the terms above.

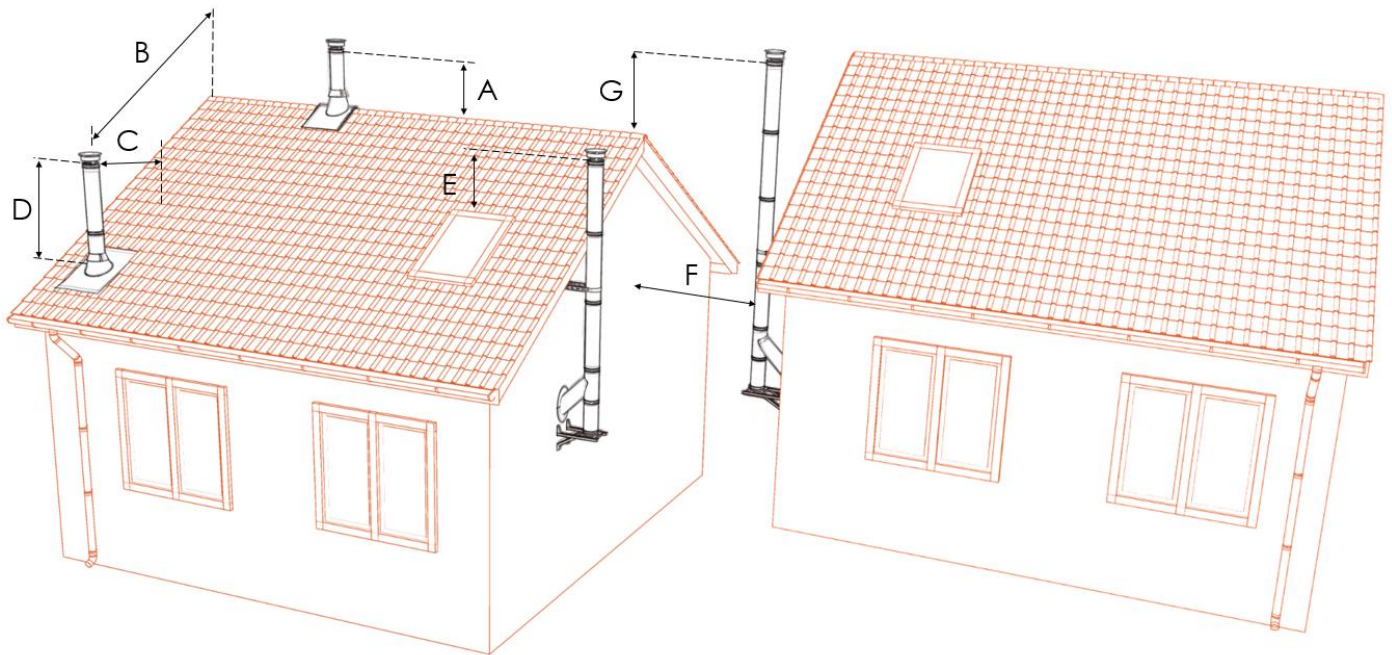
This warranty only covers the cost of the replacement product and does NOT cover the cost of any external components fixings or fittings or building work, installation or any other product/outside source other than the product supplied. All of which is the responsibility of the customer and this warranty is agreed when the sale of the product has taken place. Reasonable efforts will always be made by Flue and Ducting Ltd to resolve the situation but please note that NO cash or any other payment types will be offered instead of the replacement product. The replacement of the product is the only offer that will be made in a warranty claim. The sale of this product indicates that you agree to Flue and Ducting Ltd warranty policy. This warranty only applies in the UK, Flue and Ducting Ltd offer no warranty or any other customer service or take any responsibility for the product if/when the product leaves the UK.

This warranty does NOT cover any of our products if installed with fully condensing boilers, or where harmful/dangerous gasses/chemical fumes are being used such as chlorine or halogenic vapours.



**SOLID FUEL FLUE TERMINATION CHART**

(see Gas Vent Technical Pages for gas flue termination chart)



The chart is based on the Document J of the building regulations for solid and oil fired appliances. For more details refer to current Building Regulations and National Standards. All the below are minimum measures measured from the top of the flue excluding terminals.

- A. 600mm above the roof ridge
- B. If this measure is less than 600mm from the roof ridge, the height (D) should be 600mm above the roof ridge
- C. 2,3m measured horizontally from the surface of the roof
- D. 1m with the provision of securing the C measure, or 600mm above the roof ridge if less than 600mm
- E. 1m above the top of a flat roof and any openable window, roof light, ventilator, etc.
- F. 2,3m
- G. If F is less than 2,3m then

**IMPORTANT INFORMATION**

Most installations of solid fuel and wood biomass appliances and systems are subject to the requirements of Building Regulations and are notifiable to the Local Authority in your area by law.

HETAS registered installers can self-certify their work thus avoiding the need for costly and time consuming Building Notice applications to the local Building Control Department. HETAS Registered Businesses leave the customer with a Compliance Certificate and send a copy to HETAS for onward notification to the Local Authority.

This is a simple and effective process costing a few pounds whereas the local authority Building Notice can cost hundreds of pounds in some cases. The Certificates issued by HETAS and the notifications to Local Authority are important records demonstrating that work was done legally, by registered competent businesses and individuals and records that the registered business carried out the work in accordance with Building Regulations.

When people sell their houses - the information about work carried out under the Building Regulations in England & Wales is used by Solicitors on their inquiry forms and failure to demonstrate compliant work where applicable, can adversely affect the sale of properties.

The information gathered in this way may be used in any future home information pack (HIP) requirement; and Local Authorities are already required by law to hold such information.

Please note all information given in this technical documentation is a guideline only. The products should only be fitted by a legally qualified person. Flue and Ducting Ltd cannot take responsibility for any installations.

It is required by law you **MUST** fit a carbon monoxide alarm with every new solid fuel appliance.

## Warranty Registration Form

Installation address:

Product description	
Name of the company the product was purchased from	
Date of purchase	
Installers name and contact details	
Installers - HETAS/Gas safe/Offtech Registration.	
Date of installation.	
Type of appliance being used with Flue & Ducting Ltd product.	
Type of fuel being used and estimated usage.	

FOR YOUR WARRANTY TO BE ACTIVATED YOU MUST FILL OUT THE WARRANTY FORM WITHIN 30 DAYS OF INSTALLATION.

	BS EN 1856-1	T600	N1	D	V2	L50	050	G	50
Standard number									
Temperature rating									
Pressure rating									
Condensate resistance									
Corrosion resistance									
Liner material									
Material thickness									
Soot fire resistance									
Distance to combustibles									

**TERMS OF PAYMENT**

Subject to any special terms agreed in writing between the Buyer and Flue and Ducting Limited, Flue and Ducting Limited shall be entitled to invoice the Buyer for the price of the Goods on or at any time after despatch of the Goods, unless the Goods are to be collected by the Buyer or the Buyer wrongfully fails to take delivery of the Goods, in which event, Flue and Ducting Limited shall be entitled to invoice the Buyer for the price at any time after Flue and Ducting Limited has notified the Buyer that the Goods are ready for collection or (as the case may be) Flue and Ducting Limited has tendered delivery of the Goods.

The Buyer shall pay the price of the Goods upon despatch of the Goods unless otherwise agreed in writing. Where Flue and Ducting Limited has agreed to credit terms the Buyer shall pay the price of the Goods (less any discount to which the Buyer is entitled, but without any other deduction) within 30 days from the date of the invoice, and Flue and Ducting Limited shall be entitled to recover the price, notwithstanding that delivery may not have taken place and the property in the Goods has not passed to the Buyer. The time of payment of the price shall be of the essence of the Contract.

Receipts for payment will be issued only upon request.

In respect of any services provided by Flue and Ducting Limited, Flue and Ducting Limited's standard charges and any additional sums payable shall be paid by the Buyer (together with any applicable Value Added Tax (VAT), and without any set-off or other deduction) within 30 days from the date on the invoice.

If the Buyer fails to make any payment by the due date then, without prejudice to any other right or remedy to Flue and Ducting Limited, Flue and Ducting Limited shall be entitled to:

1. Cancel the Contract, or suspend any further deliveries or service to the Buyer
2. Appropriate any payment made by the Buyer to such of the Goods (or the goods supplied under any other contract between the Buyer and Flue and Ducting Limited), or service as Flue and Ducting Limited may think fit (notwithstanding any purported appropriation by the Buyer.
3. Charge the Buyer interest (both before and after any judgement) on the amount unpaid at the rate of 8% per annum above the National Westminster Bank base rate until payment in full is made (a part of a month being treated as a full month for the purpose of calculating interest).



**Flue & Ducting Ltd  
STOCKPORT**

Unit D6,  
Stockport Trading Estate,  
Yew Street, Stockport SK4 2JZ

**Flue & Ducting Ltd  
WELLINGTON**

8E Castle Road,  
Chelston Business Park,  
Wellington, TA21 9JQ

**Flue & Ducting Ltd  
BALLYCLARE**

Unit 16,  
Avondale Business Park  
Ballyclare, BT39 9AU

---

# flue&ducting

---

## Flue and Chimney Supplies



To order please:

**Log in:** [www.flue-ducting.co.uk](http://www.flue-ducting.co.uk)

**Email:** [sales@flue-ducting.co.uk](mailto:sales@flue-ducting.co.uk)

**Call:** 0161 480 2994

or collect from our trade counter

